

INSTRUCTION MANUAL  
MODEL 1250  
ATMOSPHERIC CONSISTOMETER

Revision L – March 2023

P/N: 12-0186

S/N: \_\_\_\_\_



2001 N. Indianwood Ave.  
Broken Arrow, Oklahoma 74012 U.S.A.  
Telephone: 918-250-7200  
Fax: 918-459-0165  
E-mail: [chandler.sales@ametech.com](mailto:chandler.sales@ametech.com)  
Website: <http://www.chandlereng.com>

Copyright 2023, by Chandler Engineering Company L.L.C.

All rights reserved. Reproduction or use of contents in any manner is prohibited without express permission from Chandler Engineering Company L.L.C. While every precaution has been taken in the preparation of this manual, the publisher assumes no responsibility for errors or omissions. Neither is any liability assumed for damages resulting from the use of the information contained herein.

This publication contains the following trademarks and/or registered trademarks: AMETEK, CHANDLER ENGINEERING. These trademarks or registered trademarks and stylized logos are all owned by AMETEK, Inc. All other company, product and service names and logos are trademarks or service marks of their respective owners.

# Table of Contents

General Information .....	P-1
Introduction .....	P-1
Purpose and Use.....	P-1
Description .....	P-1
Features and Benefits .....	P-2
Specifications .....	P-2
Safety Requirements.....	P-3
Where to Find Help .....	P-3
 Section 1 – Installation .....	1-1
Unpacking the Instrument .....	1-1
Utilities Required.....	1-1
Tools/Equipment Required.....	1-1
Setting Up the Instrument.....	1-1
 Section 2 – Operating Instructions.....	2-1
Model 1250.....	2-1
Temperature Controller .....	2-2
Temperature Controller .....	2-3
Set Point Control.....	2-Error! Bookmark not defined.
Ramp Rate Control .....	2-Error! Bookmark not defined.
Strip Chart Recorder .....	2-3
 Section 3 – Maintenance.....	3-1
Tools Required .....	3-1
Strip Chart Recorder .....	3-1
Cleaning and Service Tips.....	3-1
Calibration Procedure .....	3-3
Maintenance Schedule.....	3-1
 Section 4 – Troubleshooting Guide .....	4-1
 Section 5 - Replacement Parts .....	5-1
 Section 6 - Drawings and Schematics.....	6-1

This page is intentionally left blank.

# General Information

## Introduction

This manual contains installation, operation, and maintenance instructions for the Chandler Engineering Model 1250 Recording Atmospheric Consistometer.

### **Purpose and Use**

The Chandler Engineering Model 1250 Recording Atmospheric Consistometer is used for various tests of oil well cements as detailed in the American Petroleum Institute *Specification for Materials and Testing for Well Cements - Specification 10 A/B (API Spec 10 A/B)*. The apparatus is used in conjunction with tests for:

- Determination of Water Content of Slurry
- Determination of Fluid Loss
- Determination of Rheological Properties of Cement Slurries

### **Description**

The Chandler Engineering Model 1250 Recording Atmospheric Consistometer consists of a stainless-steel water bath that houses two slurry containers. The slurry containers are rotated by engaging the pins of the lid with the slots on the rotator. The rotators are fitted with timing sprockets driven by the motor, which is factory set at 150 rpm. The belt also drives an impeller that agitates the water bath.

An instrument cabinet, with a removable front panel, houses a microprocessor-based temperature controller that also serves as a digital temperature indicator. The temperature controller operates a relay that controls a 1500-watt heater. The Model 1250 includes cooling coils as a standard feature.

Lighted switches that also serve as circuit breakers are installed in the front panel. The circuit breaker function of these switches eliminates the necessity for in-line fuses.

The Model 1250 indicates consistency and temperature on a panel-mounted strip chart recorder. The Model 1250 also includes audible alarms that sound at preset consistency values. The alarm set points are individually adjustable on the recorder.

Slurry consistency is expressed in Bearden units of consistency, Bc, where 100 Bc is equivalent to the spring deflection observed with 2,080 grams-centimeter of torque (400 grams weight) using the weight-loaded calibrating device. For further details, refer to *API Spec 10 A/B*.

The Model 1250 is easily calibrated using the Consistency Calibration Potentiometers located on the back panel.

## Features and Benefits

- Temperature is measured accurately using a microprocessor-based temperature controller.
- Rate of water bath rise can be controlled to conform with *API Spec 10 A/B* requirements or other temperature gradients desired.
- Stainless-steel water bath ensures long trouble-free operation in the normally corrosive cement testing environment.
- Operational simplicity provides freedom from operator error and a short training period for new operators.
- Units are designed for trouble-free oil field laboratory operation.
- Direct torque spring readout permits instant determination of the slurry viscosity in Bearden Units (Bc).
- Standard deadweight calibration is both simple and rapid, aiding measurement accuracy. (An optional calibrator unit may be purchased.)
- Constant temperature is maintained by a motor-driven stirred water bath that eliminates any hot spots on the slurry containers.
- Rotational speed of the slurry container is held constant by the drive motor assembly, which is factory set at 150 rpm.
- A variable speed option is available for studies at slurry container rotational speeds other than 150 rpm.
- Internal cooling coils provide quick cooling of the slurry.
- Equipped with a strip chart recorder to provide a permanent record of temperature and viscosity.
- Viscosity alarms that can be set over the range from less than 30 Bc to 100 Bc. The alarms alert the operator that a specific viscosity has been obtained for recording data or taking other action.

## Specifications

<b>Measurement Range:</b>	0 - 100 Bc
<b>Operating Conditions:</b>	50°F - 120°F (10°C - 49°C)
<b>Maximum Temperature:</b>	200°F (93°C)
<b>Input Voltage:</b>	100–130VAC/200-240VAC, 50/60 Hz $\pm$ 10%
<b>Input Power:</b>	2 kVA
<b>Heater Wattage:</b>	1500 W
<b>Dimensions:</b>	25" (64cm) high x 15.5 (39cm) wide x 18" (45cm) deep
<b>Shipping Dimensions:</b>	29" (74cm) high x 20" (51cm) wide x 29" (74cm) deep
<b>Net Weight:</b>	110 lbs (50 kg)
<b>Shipping Weight:</b>	190 lbs (86 kg)
<b>Slurry Container Volume:</b>	28 cubic inches (470 ml)
<b>Slurry Cup Rotational Speed:</b>	150 rpm supplied as standard Option D-1 provides variable speeds from 50 - 200 rpm

# Safety Requirements

## *READ BEFORE ATTEMPTING OPERATION OF INSTRUMENT*

The Chandler Engineering Model 1250 Recording Atmospheric Consistometer is designed for operator safety. Any instrument that is capable of high temperatures should always be operated with **CAUTION!!**

To ensure safety:

- Locate the instrument in a low traffic area.
- Post signs where the instrument is being operated to warn non-operating personnel.
- Read and understand instructions before attempting instrument operation.
- Observe caution notes!
- Observe and follow the warning labels on the instrument.
- Never exceed the maximum temperature rating of the instrument.
- Due to high temperatures, be careful not to touch the water bath tank during operation.
- Always disconnect main power to the instrument before attempting any repair.
- Turn off the heater at completion of each test.
- When removing the slurry containers, use gloves to protect against high temperatures.
- Appropriately-rated fire extinguishers should be located within close proximity.

Before attempting to operate the instrument, the operator should read and understand this manual.

## Where to Find Help

In the event of problems, contact your local sales representative or Chandler Engineering:

- Telephone: 918-250-7200
- Fax: 918-459-0165
- E-mail: [chandler.sales@ametech.com](mailto:chandler.sales@ametech.com)
- Website: [www.chandlereng.com](http://www.chandlereng.com)

Instrument training classes are also available.

This page is intentionally left blank.

# Section 1 – Installation

## Unpacking the Instrument

Verify all parts listed on the packing slip have arrived with the instrument. If parts are missing, contact Chandler Engineering immediately.

## Utilities Required

100-130VAC/200-240VAC

20/15 A

50/60 Hz

Water supply

Drain

## Tools/Equipment Required

Basic hand tools

## Setting Up the Instrument

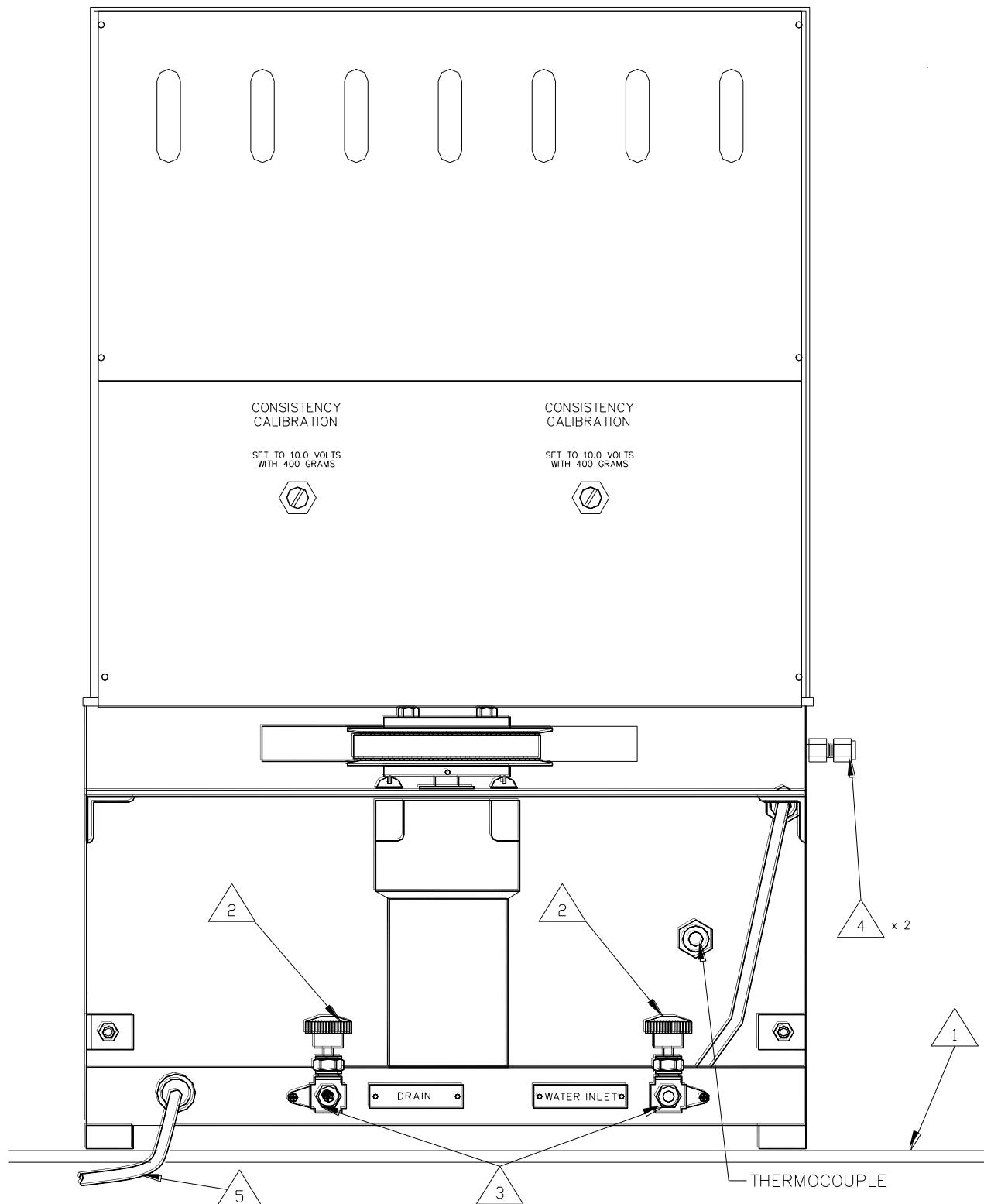
Refer to *Figure 1* for the following steps:

1. Place the instrument on a sturdy, level table.
2. Close the supply and drain valves by turning the knobs counterclockwise.
3. Connect the water supply and drain lines.
4. Connect cooling coils to a cold water source and drain, if so desired. Cooling coil use is optional. Either connection can be used for the inlet or outlet.
5. Connect power cord to the correct voltage source.

*Note: To prevent shock hazard, connect the instrument to an electrical outlet using a three-prong socket to provide positive ground.*

FIGURE 1  
INSTALLATION – SETTING UP THE INSTRUMENT

$\triangle_x$  = STEP #



# Section 2 – Operating Instructions

## Model 1250

As described in *Calibration Procedure*, found in *Maintenance - Section 3*, the paddle should be checked to ensure that it is not bent or does not rub the inside of the slurry container.

Refer to *Figure 2* for the following steps unless otherwise noted:

1. Remove the slurry container.
2. Open the water supply valve by turning the knob counterclockwise and fill the bath until it is 1/2" (12.5mm) below the brass rotating sleeve (Refer to *Section 1 – Installation; Figure 1*).
3. Close the water supply valve by turning the knob clockwise when the appropriate water level is obtained (Refer to *Section 1 – Installation; Figure 1*).
4. Prepare sample and fill the slurry container as detailed in *API Spec 10 A/B*.
5. Attach the container lid to the slurry container.

*Caution: Line up the pointed end of the paddle to the center pivot hole at the bottom of the slurry container to ensure smooth rotation.*

6. Install the slurry container in the instrument. Be sure the bottom roll pin on the container lid fits into the brass rotator sleeve slots.
7. Turn the container lid until the torque bar fits into the anchor stop.
8. Verify the Mic plug is connected to the appropriate socket located on the front panel.
9. Turn the master switch on.
10. Use the temperature controller to set the desired temperature or heating profile. Refer to *Set-point Control* in the *Temperature Controller* section for further details.
11. Turn on the motor switch.
12. Turn on the heater switch.
13. An alarm will sound upon completion of the test (the alarm is factory set to 100 Bc and will independently sound for each cylinder).

*Caution: Remove the slurry on or before 100 Bc of torque to prevent shearing of the shear pin or slippage of the indicator caused by forcing it against the stop.*

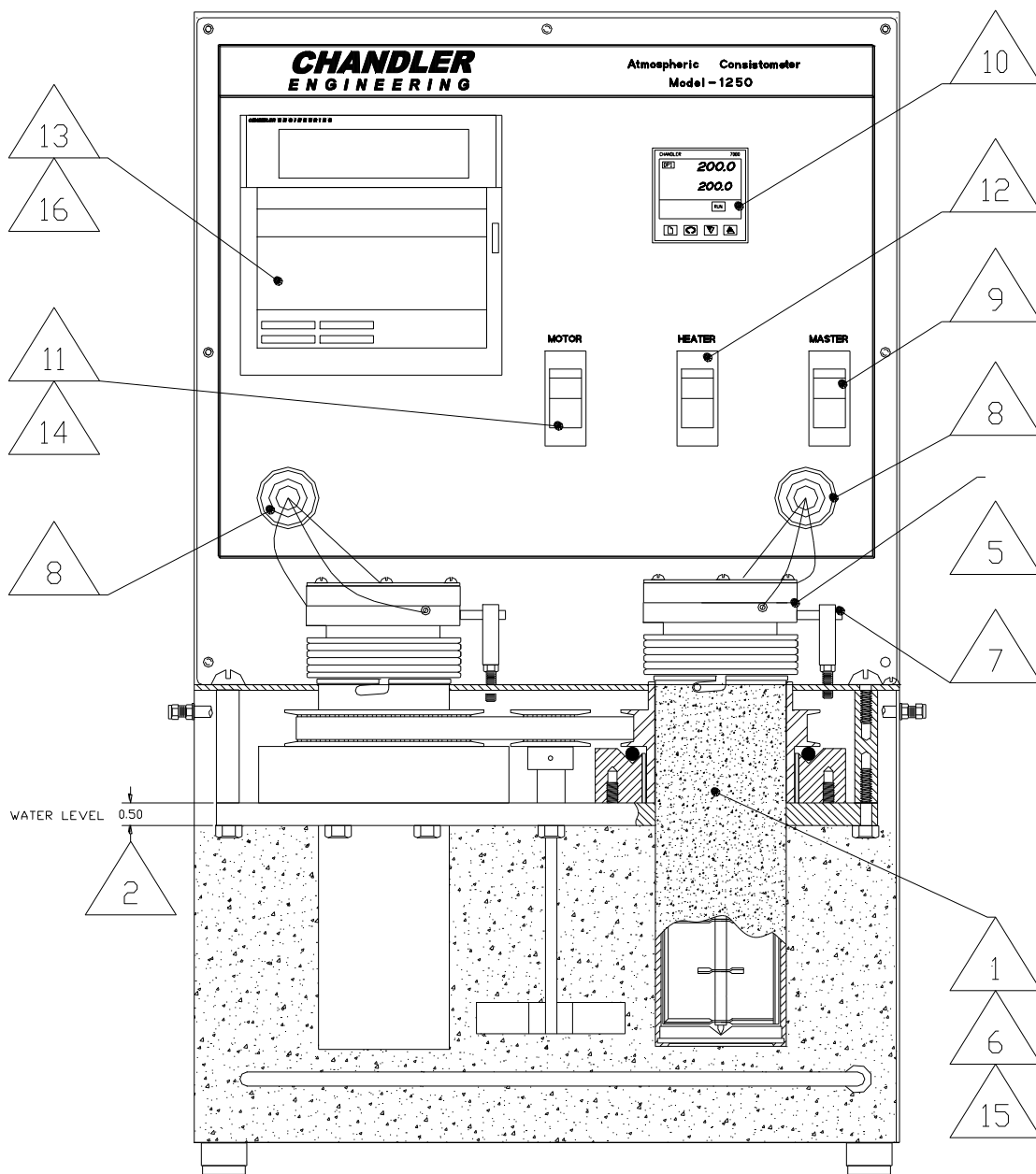
14. After completion of the test, the alarm will sound. Turn off the motor switch.
15. Remove the slurry container. If only one slurry container is removed, the motor switch can be turned on to finish the other test if necessary.

*Note: The buzzer will continue to sound until the alarm is cleared on the chart recorder.*

16. Before draining the water, turn off the heater and power switches.
17. Open the drain valve by turning the knob counterclockwise to remove the water from the tank (Refer to *Section 1 – Installation; Figure 1*).
18. Close the drain valve by turning the knob clockwise (Refer to *Section 1 – Installation; Figure 1*).

FIGURE 2  
OPERATING PROCEDURE -- MODEL 1250

$\triangle x$  = STEP #



# Temperature Controller

**FIGURE 3**



**Upper Readout:** Displays the current value of the process variable. If the controller is being used to control temperature, this value indicates the temperature of the pressure vessel. This value is green when the controller or display is not in an Alarm state.

**Alarm Beacon:** Flashes when any new alarm occurs (e.g. Over Temperature or Over Pressure or Sensor Break). The beacon will stay illuminated when an alarm is acknowledged but still active.

**Lower Readout:** Displays the target Set Point if the controller is in Automatic Mode. This displayed value will vary depending on the mode of the controller. This line may also display a scrolling message.

**Manual Mode:** Indicates Manual Mode has been selected. In Manual Mode, the Raise and Lower buttons operate on the Output Power. In Automatic Mode (this icon is off), the Raise and Lower buttons operate on the Set Point.

**Output Indicators:** Illuminate when the appropriate output is activated. On this controller, only Output 1 is used.

**Page:** Used to page through the various menus in the controller.


**Scroll:** Used to scroll through the parameter settings within a menu page.

Note: Press Page + Scroll to return to the “Home” Display. When at the Home Display, Page + Scroll will acknowledge any alarm.

**Lower / Raise:** Used to change the value of a parameter. Press and hold the button for rapid changes.

### **Set-Point Control Configuration**

The temperature controller is used to control the temperature of the water bath. To set the water bath temperature, perform the following:

1. The controller should be in Auto mode. If the Manual Mode indicator  is illuminated, press and hold the **Up and Down** buttons for more than 3 seconds.
2. Adjust the Temperature Set Point with the **Up** and **Down** arrow buttons. When the temperature is being controlled, the Output **1** light will flash.

## **Strip Chart Recorder**

Refer to the accompanying instruction manual for the strip chart recorder for operation.

# Section 3 – Maintenance

## Tools Required

Adjustable wrench  
Phillips screwdriver

## Strip Chart Recorder

Refer to the accompanying instruction manual for the strip chart recorder regarding any maintenance instructions.

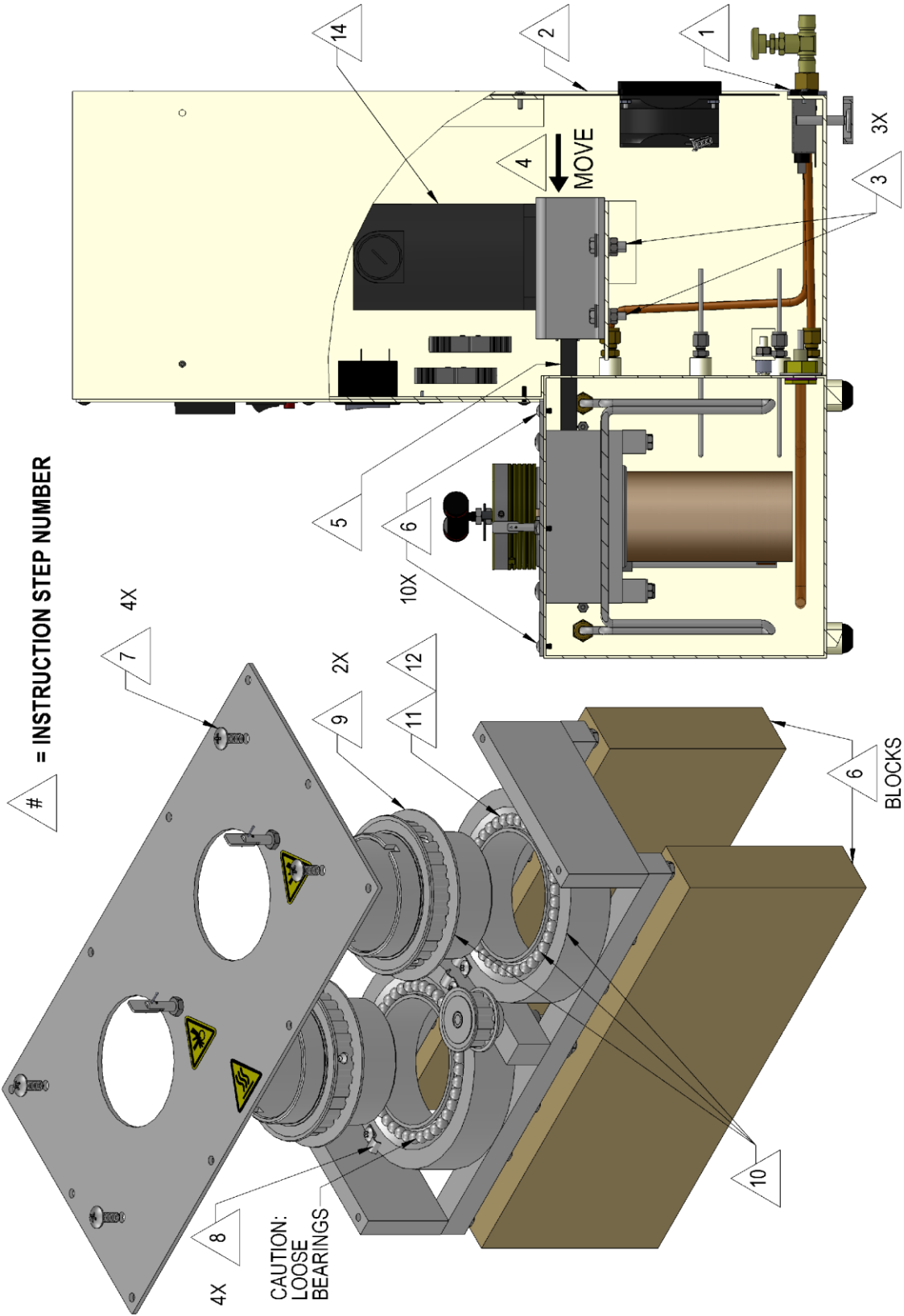
## Cleaning and Service Tips

The slurry cup rotators are moved on fluorocarbon polymer bearings that have low friction resistance and require only occasional lubrication. It is recommended that the rotators be examined periodically and lubricated with a light lubricating oil.

Refer to *Figure 3* for the following steps:

1. Disconnect electrical power.
2. Remove back protective cover plate.
3. Loosen bolts on motor mounting bracket.
4. Push motor forward.
5. Remove belt from motor timing sprocket.
6. Remove the ten (10) outer screws on the deck cover, remove the entire assembly from the water bath, and set it on blocks to prevent damage to the rotators.
7. Remove the four (4) inner screws on the deck and remove the top plate from the bearing housing.
8. Loosen and rotate retaining tabs securing the rotators in the bearing housing.
9. Pull rotators. (**CAUTION:** Watch for loose bearings when rotators are removed!)
10. Clean rotators, bearings and bearing assembly.
11. Place bearings in bearing assembly. (**CAUTION:** Use 38 bearings per rotator!)
12. Apply oil generously to bearings.
13. Re-assemble instrument.
14. Pull motor back only enough to prevent belt slippage. Allow approximately 1/2" (12.5mm) slack in drive belt to prevent excessive side thrust to bearings. (**CAUTION:** Do not over-tighten belt!)

FIGURE 4 - CLEANING AND SERVICE TIPS



## Calibration Procedure

Before calibration and operation of the instrument, the paddle should be tested for excessive friction by running the slurry container without cement inside. If the paddle is bent so that it rubs on the side, appreciable movement will be shown on the strip chart recorder. The bearings in the slurry-indicating lid should be checked for excessive friction. Any abnormality should be corrected before proceeding with the instrument calibration.

Calibration and operation of the instrument is described in *API Spec 10 A/B*. This instrument is equipped with a calibrating spring and can be calibrated using the calibration device. The calibration device can be purchased separately. The roller located on the side of the calibration device is raised to a position so that the cord is level with the lid.

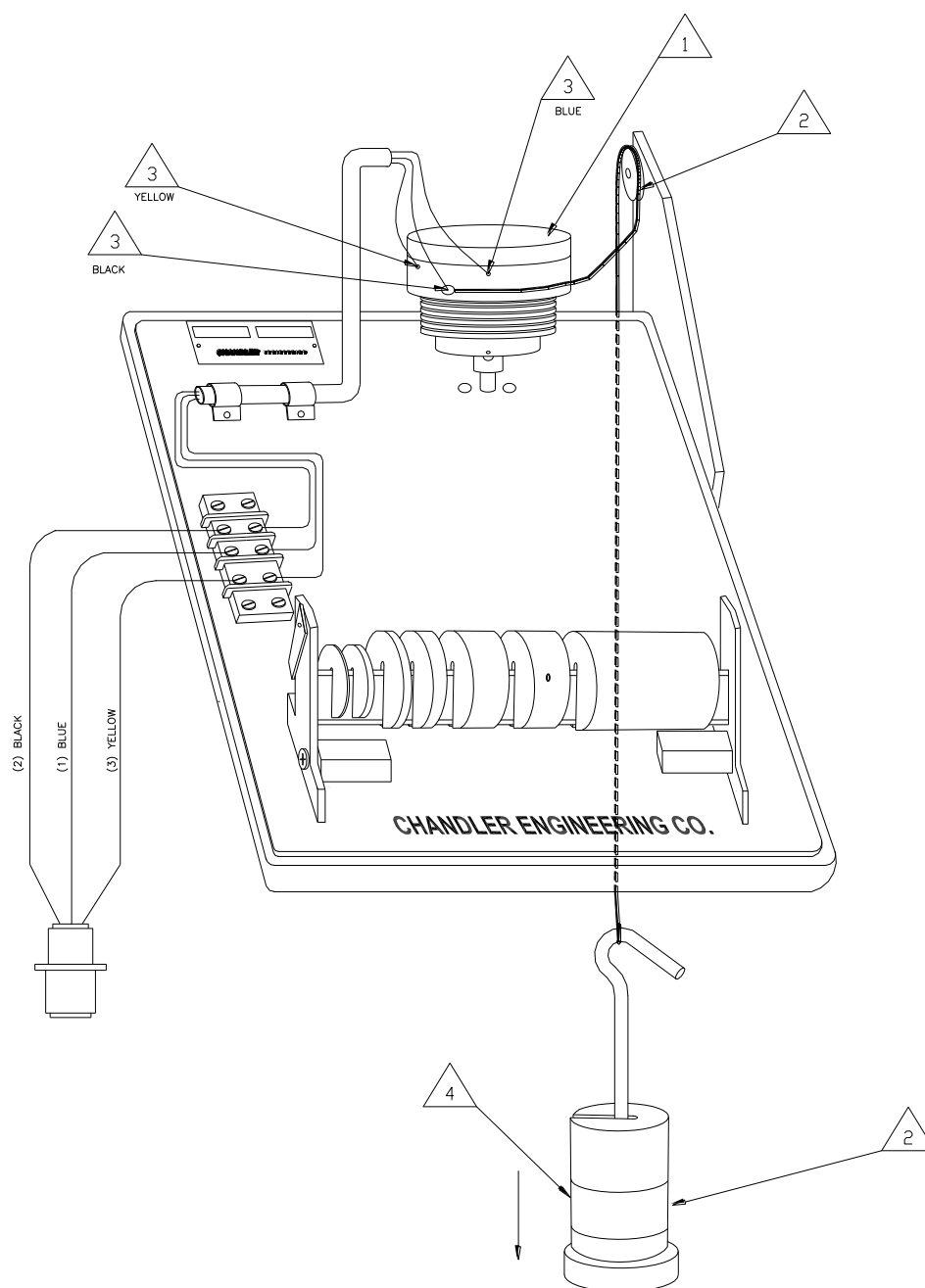
Refer to *Figure 4* for the following steps unless otherwise noted:

1. Place the container lid on the calibration assembly.
2. Place the cord counterclockwise around the lid and attach 400 grams of weight.
3. Connect the wires to the appropriate pins located on the container lid. Position the wires so they don't restrict the rotation of the container lid.
4. Pull the weight down slightly and release a few times to obtain an average reading.
5. Adjust the Consistency Calibration Potentiometer located on the back of the instrument (*Refer to Section 1 – Installation; Figure 1*) until the recorder reads 100 Bc.
6. Repeat steps 1 through 5 for the other slurry container if necessary.

*Note: The Consistency Calibration Potentiometers are located on the back panel of the instrument and directly behind the appropriate slurry containers.*

FIGURE 4  
CALIBRATION PROCEDURE- MODEL 1250

$\triangle x$  = STEP #



## Maintenance Schedule

MAINTENANCE SCHEDULE MODEL 1250 ATMOSPHERIC CONSISTOMETER					
COMPONENT	EACH TEST	MONTHLY	3 MONTHS	6 MONTHS	ANNUAL
Slurry Cup	Disassemble Clean Inspect				
Potentiometer Mechanism	Clean Inspect		● Calibrate		
Drive Motor					● Check Speed
Rotators and Bearings			Clean Lubricate		
Temperature Controller					● Calibrated By Qualified Factory Service Technician
Thermocouple					● Calibrated By Qualified Factory Service Technician
<p>This maintenance schedule applies to normal usage of two tests per day. Detailed procedures for these operations are contained in your manual.</p> <p>● Per API Specifications</p>					

This page is intentionally left blank.

## Section 4 – Troubleshooting Guide

Problem	Solution
Unit will not power-up.	1. Check main power.
Drive motor is inoperative.	<ol style="list-style-type: none"> <li>1. Replace motor controller fuse on the motor speed control board.</li> <li>2. Clean and lubricate the bearings and rotators.</li> <li>3. Replace brushes in the motor.</li> <li>4. Replace the motor speed control board.</li> <li>5. Replace motor.</li> </ol>
Heater system is inoperative.	<ol style="list-style-type: none"> <li>1. Replace solid state relay.</li> <li>2. Replace temperature controller.</li> <li>3. Replace heater.</li> </ol>
Timer is inoperative.	1. Replace timer.
Chart is hard to read.	1. Replace pens.

This page is intentionally left blank.

# Section 5 - Replacement Parts

Part Number	Description
07-0176	Thermocouple Assembly
07-0505-03	Potentiometer Calibrating Device Assembly (Optional)
12-0021	Paddle Assembly
12-0023	Container Assembly
12-0031	Cross Bar Support
12-0033	Heater Assembly, 220V
12-0044	Bearing Housing Assembly
12-0045	Rotator Assembly
12-0047	Sprocket, Idler and Stirrer Assembly
12-0048	Impeller and Shaft Assembly
12-0057	Heater Assembly, 110V
12-0059	Internal Cooling Coil
12-0082	Container Lid Assembly - Potentiometer Type
12-0091	Anchor Stop Assembly
12-0126	Cabinet and Tank Assembly
12-0176	Timing Belt Sprocket, Coated
12-0177	Split Bushing, Coated
7080	Temperature Controller
C07882	DC Power Supply
C07952	Potentiometer, 100 Ohm, CTS, 5W, 500 VDC
C09286	Motor, Gear, DC (S/N 1254 and above)
C09287	Controller, DC Control, Model 0865 (S/N 1254 and above)
C10647	Recorder, 3 Pen
C10828	Recorder, 3 Pen, Red
C10829	Recorder, 3 Pen, Green
C10830	Recorder, 3 Pen, Blue
C10832	Recorder Paper
P-0025	Cable Clamp
P-0417	Terminal Block, 6 Conductor
P-0424	Terminal Block, 2 Conductor
P-0655	Glider Foot
P-1233	Rubber Foot
P-1418	Socket, 3 Contact
P-1500	Needle Valve
P-1648	Set Collar
P-1649	Timing Belt
P-1653	Terminal Strip
P-1698	Nylon Bearing Balls
P-1938	Step-down Transformer, 220 VAC
P-2005	Terminal Jumpers
P-2702	Resistor, 2K Ohm, 8W, 5%, WW
P-2948	Variable Speed Control Knob
P-3255	Motor, Gear, DC, 1/17HP, 208RPM (S/N 1253 and below)

Part Number	Description
P-3256	Control, Motor Speed (S/N 1253 and below)
P-3330	Solid State Relay
P-3387	Circuit Breaker Switch, 16A, 110 VAC
P-3388	Circuit Breaker Switch, 10A, 220V
P-3389	Circuit Breaker Switch, 8A, 220V
P-3390	Circuit Breaker Switch, Motor, 3A,110 VAC

To ensure correct part replacement, always specify Model and Serial Number of instrument when ordering or corresponding.

This page is intentionally left blank.

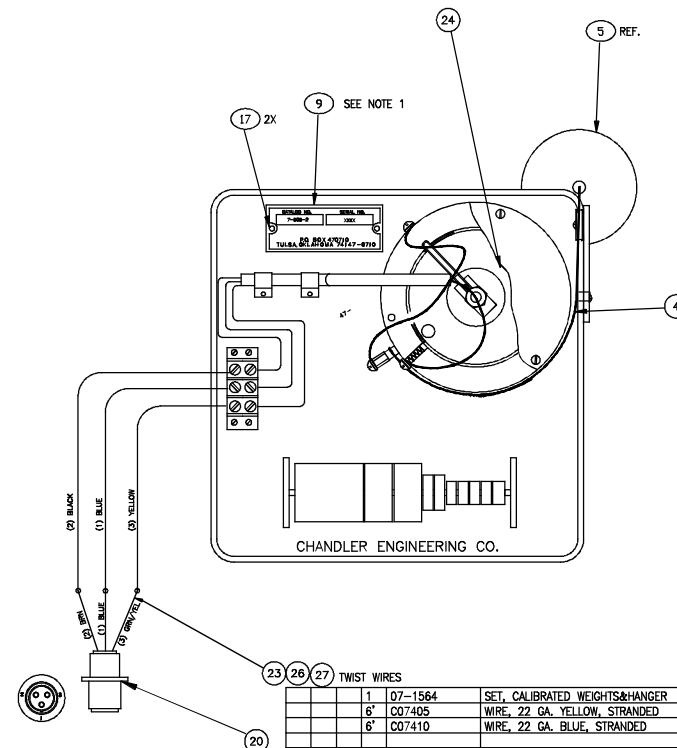
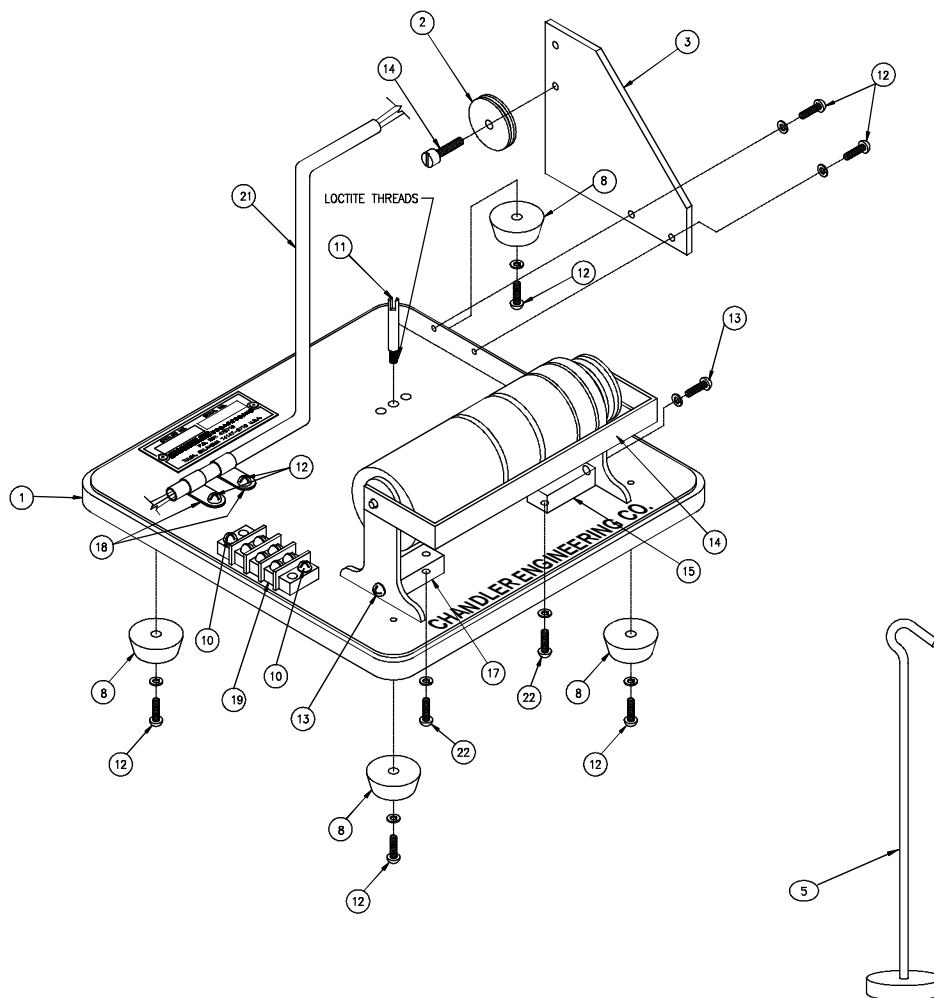


## Section 6 - Drawings and Schematics

<b>Drawing Number</b>	<b>Description</b>
07-0505-03	Potentiometer Calibration Device Assembly
12-0082	Container Lid Assembly
12-0134	Model 1250 Atmospheric Consistometer
12-0158	Wiring Schematic, 200-240VAC
12-0178	Wiring Schematic, 100-130 VAC

This page is intentionally left blank.

			REVISIONS		
EDN	ZONE	REV	DESCRIPTION	DATE	APPROVED
T1726		F	ADDED ITEMS 9 & 17 AND NOTES	7/8/08	TC
T2889		G	UPDATED MANMAN BOM ONLY	4/15/10	TC
T3138		H	UPDATE P-1417	7/20/10	SS/TC
T3329		J	MAKE 12-0082 A REF, CHG ITEMS 23,26,27 TO 22	GA 9/23/10	SS/TC
T4282		K	ADD ITEM 28	12/12/11	SS/TC



1. 57-0003 SERIAL NUMBER PLATE MUST BE STAMPED WITH PART NUMBER AND SERIAL NUMBER OF 07-1564 WEIGHT SET BEFORE RIVETING IN PLACE.
2. SERIAL NUMBER OF CALIBRATOR MUST MATCH WEIGHT SET, HANGER, AND CERTIFICATION SHEET. CERTIFICATION SHEET MUST BE SHIPPED WITH CALIBRATOR.

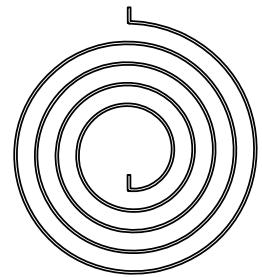
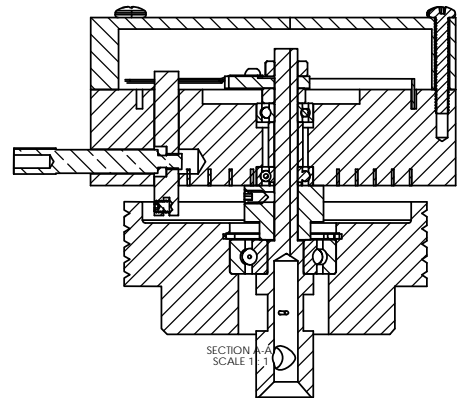
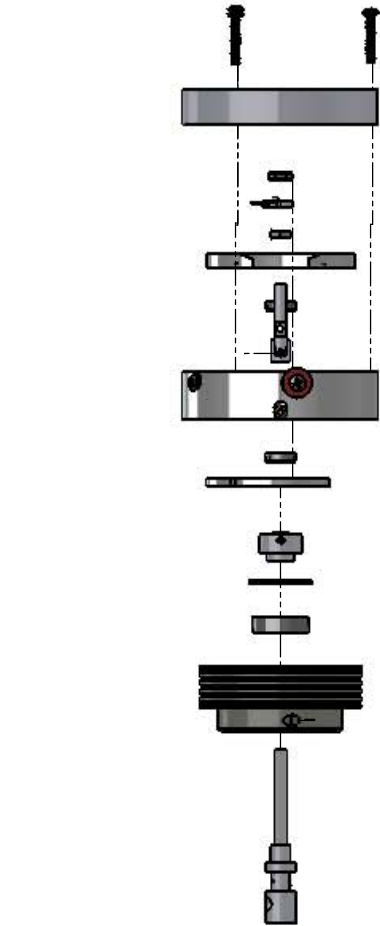
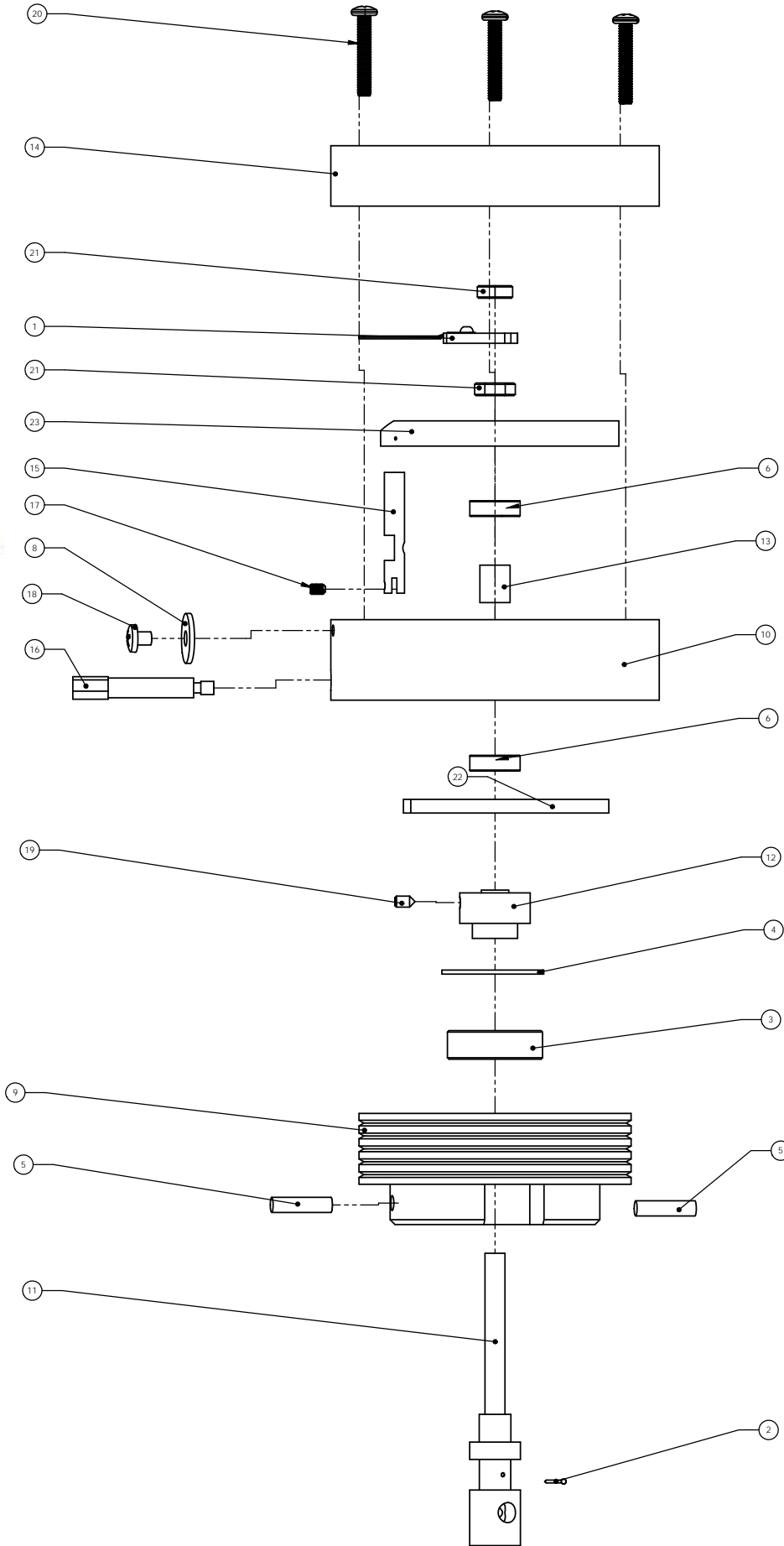
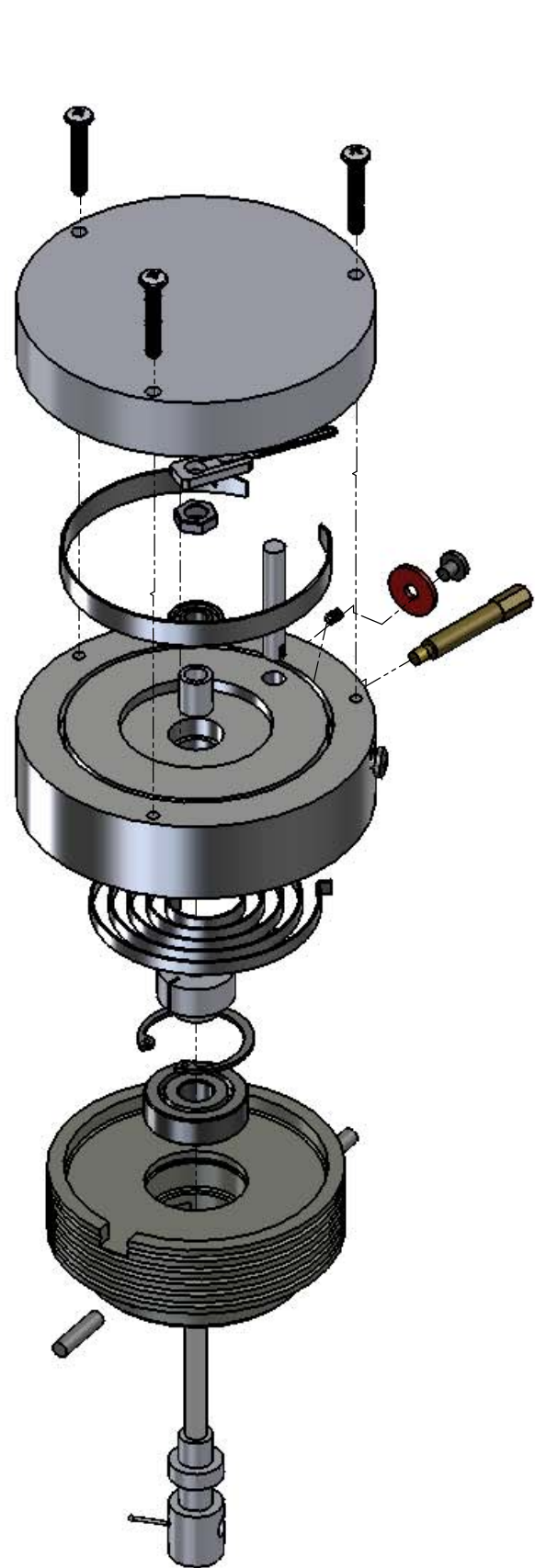
1	07-1564	SET, CALIBRATED WEIGHTS&HANGER		2
6'	C07405	WIRE, 22 GA. YELLOW, STRANDED	COPPER	2
6'	C07410	WIRE, 22 GA. BLUE, STRANDED	COPPER	2
REF	12--0082	LID ASSY, RECORDING (SUPPLIED W/ ATMOSPHERIC		2
6'	C07409	WIRE, 22 GA. BLACK, STRANDED	COPPER	2
2	H-8018	SCREW, 8-32 X 5/8"LG		2
1	07-0516-02	TUBE, WIRE HOLDER	SST	2
1	P-1417	CABLE,3 COND,TRUCK RSM30-2M		1
1	P-0698	TERMINAL, 3 CONDUCTOR		1
2	P-0724	CLIP, TUBE HOLDER	NYLON	1
2	H-100000	RIVET,POP AD 32 ABS	ALUM	1
2	H-8001	WASHER, LOCK #8	SST	1
6	H-6001	WASHER, LOCK SPLIT #6	SST	1
1	C08848	SCREW, S/H, SHOULDER, 8-32 X 3/16 LG	SST	1
4	H-8011	SCREW, BINDG HD, 8-32 X 3/8 LG.	SST	1
8	H-6017	SCREW, BINDG, 6-32 X 3/8 LG.	SST	1
1	07-0593	SHAFT, PIVOT ADAPTER	SST	1
1	H-6019	SCREW, 6-32 X 1/2"LG		1
1	57-0003	MODEL/SIGNAL PLATE		1
4	P-1233	FET, BAS	RUBBER	9
2	07-0508	BRG, MOUNTING, WEIGHT SET	ALUM.	7
REF	07-1537	SET,CALIBRATED WEIGHT	BRASS	6
REF	07-1538	HANGER,CALIBRATED WEIGHT	ALUM.	5
1	07-0519	CORD ASSEMBLY, WEIGHT HANGER	NYLON	4
1	07-0595	SUPPORT, PULLEY	ALUM.	3
1	C08847	PULLEY	PLASTIC	2
1	07-0507	BASE PLATE	CAST ALUM.	1

-04	-03	-02	-01	07-USA	BASE PLATE	CASUALTY	PC
QTY. RECD.				PAGE NUMBER	DESCRIPTION	MATERIAL SPEC.	
				PARTS LIST			
				CHANDLER ENGINEERING			
1250-00				ATMOSPHERE-RECORDING	TITLE		
UNIT ASBY				USED ON	ASSEMBLY, POTENTIOMETER		
APPLICATION				1 PLACE +0.030 [76] 2 PLACE +0.010 [25] 3 PLACE +0.005 [127] 4 PLACE +0.002 [127] WHEEL SURF. FINEP 3/32	CALIBRATING DEVICE-RECORDING		
BREAK SHIP OFFERS, DECLAR				APPROVALS	DATE		
NOTES: 1. This drawing is the property of Chandler Engineering Co. and is to be used only for the purpose specified. 2. The user agrees to return this document to the owner of the drawing on completion of the work. 3. The user agrees to return this document to the owner of the drawing on completion of the work.				DESIGNED BY	DATE	SIZE	D
				CHECKED BY	DATE	DWG NO.	07-0505-03
				DATE	1	1	1

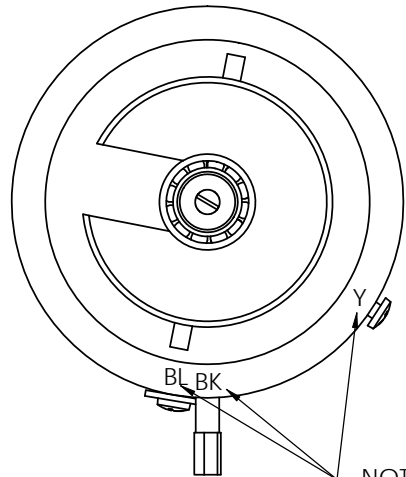
This document and the drawings and technical data contained herein are the property of Chandler Engineering Company LLC. Reproduction or dissemination in any form except as expressly authorized by the owner is forbidden. The holder agrees to return this document to the owner on demand.

Copyright © Chandler Engineering Company LLC

REVISIONS				
ZONE	REV.	DESCRIPTION	DATE	APPROVED
	H	ECN# T2247, CREATE IN SOLIDWORKS	4/14/09	SS/TC



SPRING ORIENTATION  
(CLOCKWISE ROTATION)



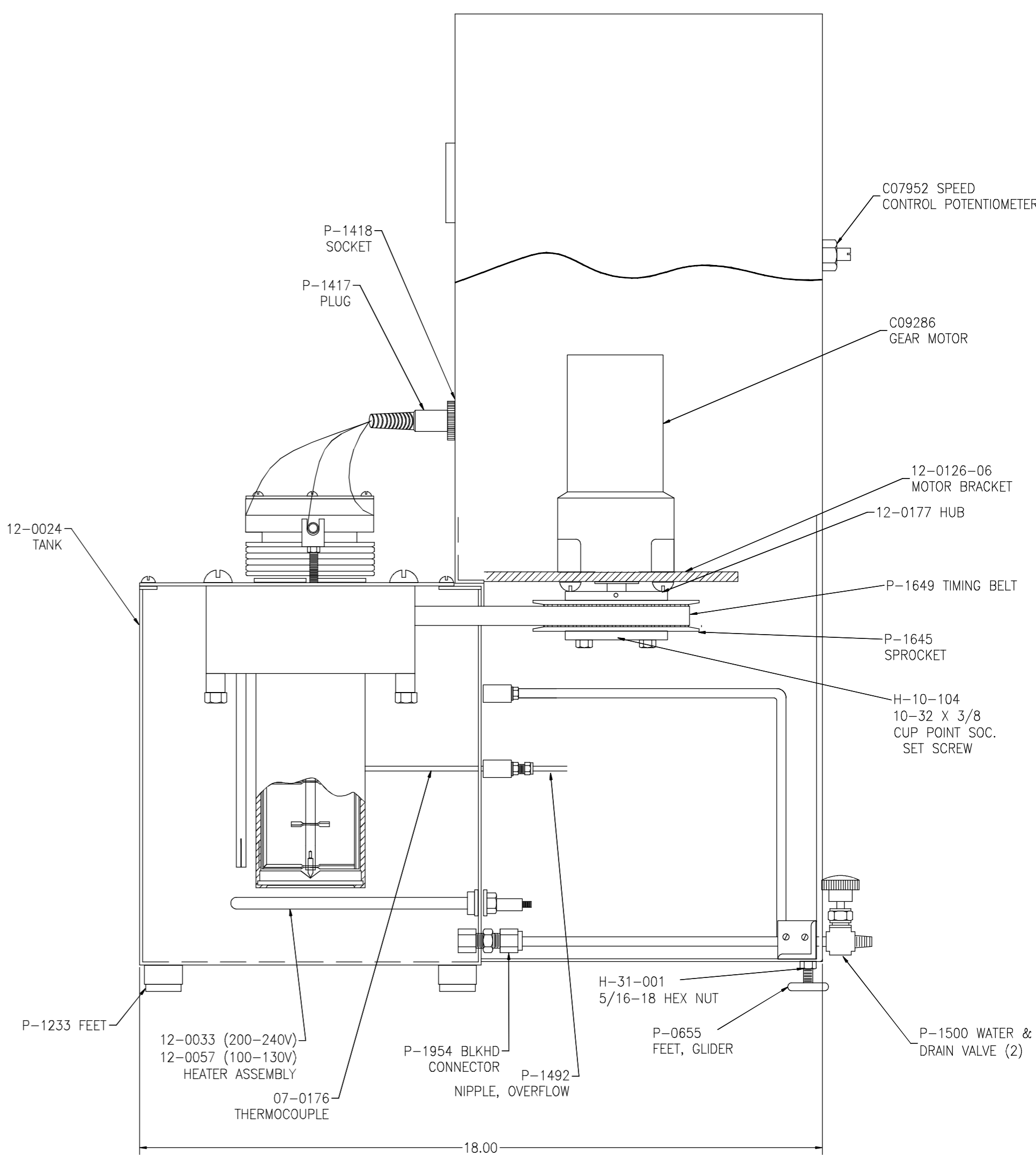
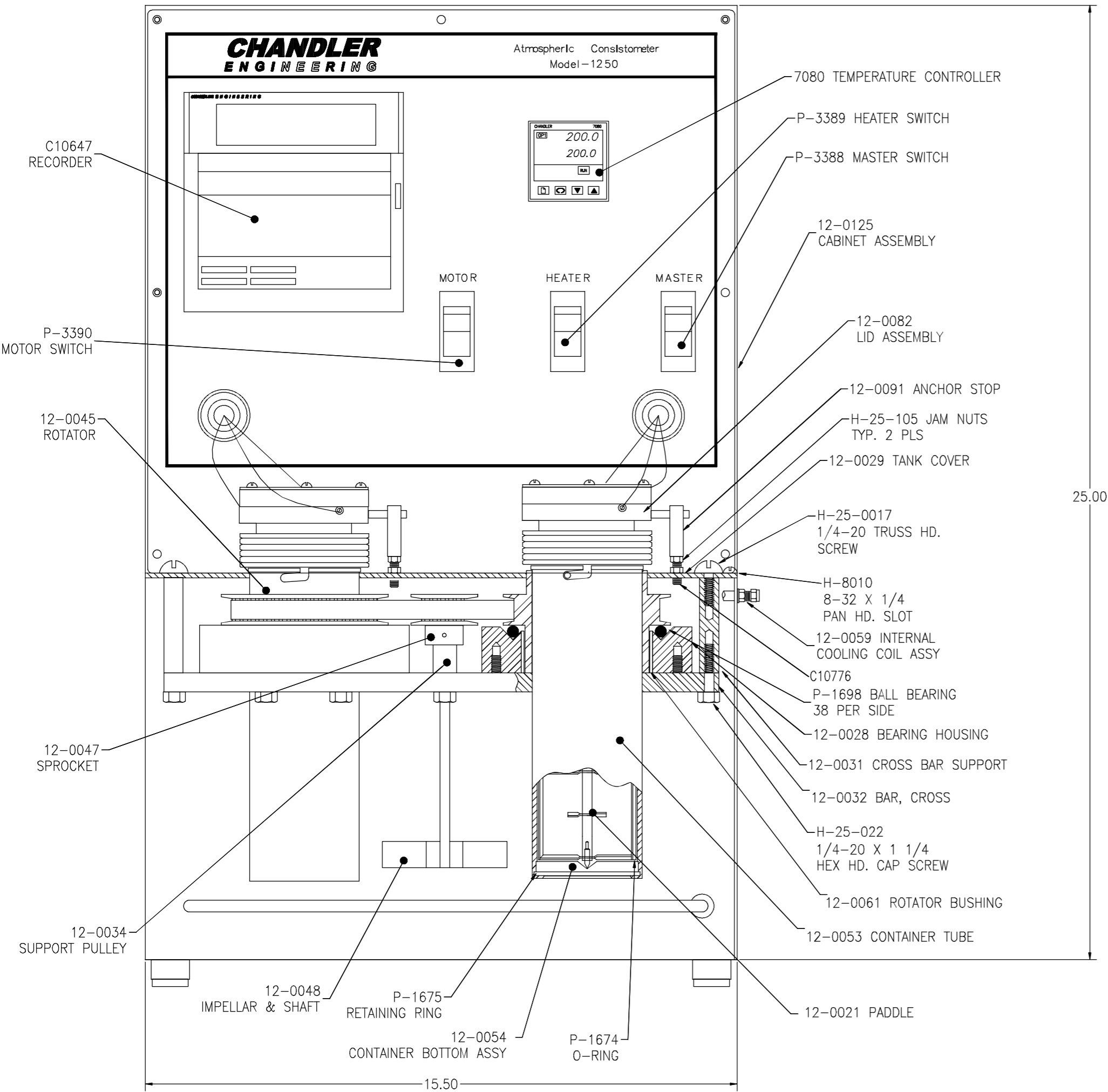
-NOTE: STAMP ON LID ASSY.

ITEM NO.	PART NUMBER	Description	exploded/ QTY.
1	12-0090	WIPER	1
2	P-0844	PIN SHEAR,BRS.0.035x0.50L	1
3	P-1588	BEARG BALL, .393X1.181X.354	1
4	P-1642	RING,RTNG,INT,1.319OD	1
5	P-1683	PIN,ROLL,.1875X.75L	2
6	P-1809		2
7	P-2046	SPRING, CONTACT	2
8	07-0451	WASHER, FIBRE	2
9	12-0015	SYNTHANE,RND,3.50X1.50L,GR LE	1
10	12-0083	FRAME	1
11	12-0084	SHAFT, TORQUE	1
12	12-0085	CALIBRATION SPRING COLLAR	1
13	12-0086	SPACER-BEARING	1
14	12-0087	COVER	1
15	12-0088	CALIBRATION SPRING RETAINING PIN	1
16	12-0089	TORQUE BAR	1
17	H-5003	SCREW,SKHSS,SS.5-40X0.187,CUP	1
18	H-8007	SCREW, 8-32 X 3/16 LG. BNDG HD PHILLIPS	2
19	H-6035	SCREW, SET, 6-32 X 1/4 LG. CONE POINT	1
20	H-8022	SCREW,BHMS,SS,8-32X1.000,PHIL	3
21	H-25-002	NUT,SST,HX,10-32	2
22	07-0064	SPRING,CALIBRATION	1
23	07-0058-1	ASSY.RESISTOR,POT MECH	1

QTY. REQD.		PARTS LIST					
		UNLESS OTHERWISE SPECIFIED DIMENSIONS IN INCHES TOLERANCES: 1 PLACE ±0.030 2 PLACE ±0.010 3 PLACE ±0.005 ANGLES ±1/2" $\frac{3}{4}$ SURF. FINISH		<b>CHANDLER ENGINEERING</b>  TITLE  LID ASSEMBLY			
NEXT ASSY USED ON							
APPLICATION		APPROVALS		DATE		SIZE	
BREAK SHARP EDGES, DEBURR		DRAWN: SS		4/14/09		DWG NO.	
THE DRAWINGS AND TECHNICAL DATA CONTAINED HEREIN ARE THE PROPERTY OF CHANDLER ENGINEERING COMPANY, LLC AND DISSEMINATION IN ANY FORM EXCEPT AS EXPRESSLY AUTHORIZED BY THE OWNER IS FORBIDDEN. THE HOLDER AGREES TO RETURN ALL DRAWINGS AND DATA TO THE OWNER ON DEMAND. COPYRIGHT BY CHANDLER ENGINEERING COMPANY, LLC		CHECKED: JCM		4/15/09		12-0082	
		ENGR.: TJM		4/15/09		SCALE: 1:8	
		TITLE BLOCK REV: 2.0				SHEET: 1 of 1	

THIS DOCUMENT AND THE DRAWINGS AND TECHNICAL DATA CONTAINED  
HEREON ARE THE PROPERTY OF CHANDLER ENGINEERING COMPANY, LLC  
REPRODUCTION OR DISSEMINATION IN ANY FORM EXCEPT AS EXPRESSLY  
AUTHORIZED BY THE OWNER IS FORBIDDEN. THE HOLDER AGREES TO RETURN  
THIS DOCUMENT TO THE OWNER ON DEMAND.  
COPYRIGHT BY CHANDLER ENGINEERING COMPANY, LLC

REVISIONS				
ZONE	REV	DESCRIPTION	DATE	APPROVED
	H	ECN 8668; CHANGED RECORDER	09-19-03	AMH/TC
C-5	J	ECN T1816; ADDED "38 PER SIDE"	8/7/08	TC
C-5	K	ECN T2010; C10647 WAS C10812	11/07/08	SS/TC
D-2	L	ECN T6863; MOTOR ORIENTATION	10/28/15	CAC/TC

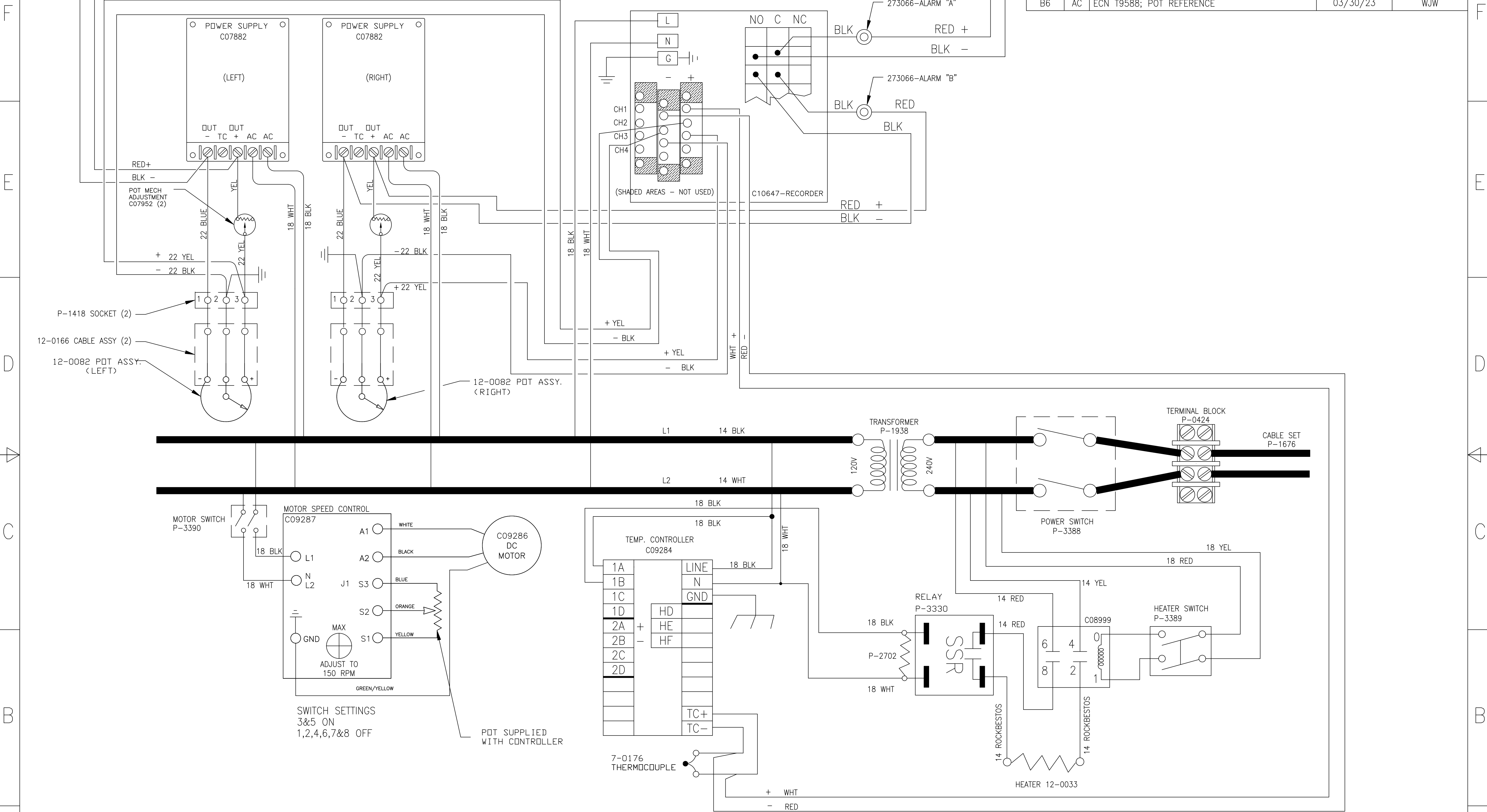


		UNLESS OTHERWISE SPECIFIED DIMENSIONS IN INCHES [mm]		<b>CHANDLER ENGINEERING</b>			
		TOLERANCES:					
		1 PLACE	±0.030 [.76]	TITLE  MODEL 1250 ATMOSPHERIC CONSISTOMETER			
		2 PLACE	±0.010 [.25]				
		3 PLACE	±0.005 [.127]				
		ANGLES	± 1/2°				
		SURF. FINISH	32✓				
NEXT ASSY	USED ON						
APPLICATION		APPROVALS	DATE				
This document and the drawings and technical data contained hereon are the property of Chandler Engineering Company LLC. Reproduction or dissemination in any form except as expressly authorized by the owner is forbidden. The holder agrees to return this document to the owner on demand.  Copyright by Chandler Engineering Company LLC		DRAWN: AEB	12/17/98	SIZE	S.O. NO.	DWG NO.	REV.
		CHECKED: JH	12/17/98	A2		12-0134	L
		ENGR.: JJM	12/17/98	SCALE: 1 = 1	DO NOT SCALE DRAWING	SHEET: 1 of 1	

This document and the drawings and technical data contained hereon are the property of Chandler Engineering Company LLC. Reproduction or dissemination in any form except as expressly authorized by the owner is forbidden. The holder agrees to return this document to the owner on demand.

Copyright by Chandler Engineering Company LLC

REVISIONS				
ZONE	REV	DESCRIPTION	DATE	APPROVED
	AB	ECN T6863; MOTOR WIRING AND SWITCH SETTINGS	10/28/15	CAC/TC
	B6	ECN T9588; POT REFERENCE	03/30/23	WJW



- NOTES:
- COVER ALL SOLDER JOINTS WITH SHRINK TUBING.
  - TIN ALL WIRE ENDS FOR CONNECTION TO RECORDER, CONTROLLER AND POWER SUPPLIES.
  - ALL WIRE 18 AWG UNLESS OTHERWISE NOTED.
  - CALIBRATE TORQUE SYSTEM USING CALIBRATION APPARATUS AT 100 Bc.
  - USE TERMINAL BLOCKS (P-0417, P-1653) AS REQUIRED TO ROUTE AC POWER WIRING.
  - TWIST ALL AC POWER AND DC SIGNAL WIRING.

		UNLESS OTHERWISE SPECIFIED DIMENSIONS IN INCHES [mm]		CHANDLER ENGINEERING						
				TOLERANCES:		TITLE  WIRING DIAGRAM ATMOS. CONSISTOMETER 200-240V				
				1 PLACE     ±0.030 [.76]						
				2 PLACE     ±0.010 [.25]						
		3 PLACE     ±0.005 [.127]								
NEXT ASSY	USED ON	ANGLES SURF. FINISH		±1/2°		32✓				
APPLICATION		APPROVALS		DATE						
and the drawings and technical data contained hereon are the property of Chandler Engineering Company LLC. Reproduction or use in any form except as expressly authorized by the owner is prohibited. The owner agrees to return this document to the owner on _____.		DRAWN: STAFF		02-03-98		SIZE	S.O. NO.	DWG NO.	REV.	
		CHECKED: JJM		02-04-98		C		12-0158	AC	
		ENGR.: JJM		02-04-98		SCALE:	1 = 1	DO NOT SCALE DRAWING	SHEET:	1 of 1
Copyright by Chandler Engineering Company LLC										

This document and the drawings and technical data contained hereon are the property of Chandler Engineering Company LLC. Reproduction or dissemination in any form except as expressly authorized by the owner is forbidden. The holder agrees to return this document to the owner on demand.

Copyright by Chandler Engineering Company LLC

REVISIONS				
ZONE	REV	DESCRIPTION	DATE	APPROVED
D-7	M	ECN T3138, UPDATE P-1418	7/20/10	SS/TC
	N	ECN T5910; REPL P-3255 W/C09286	5/2/14	TC
	P	ECN T6863; MOTOR WIRING AND SETTINGS	10/28/15	CAC/TC
B6	R	ECN T9588; POT REFERENCE	03/30/23	WJW

F

F

E

E

D

D

C

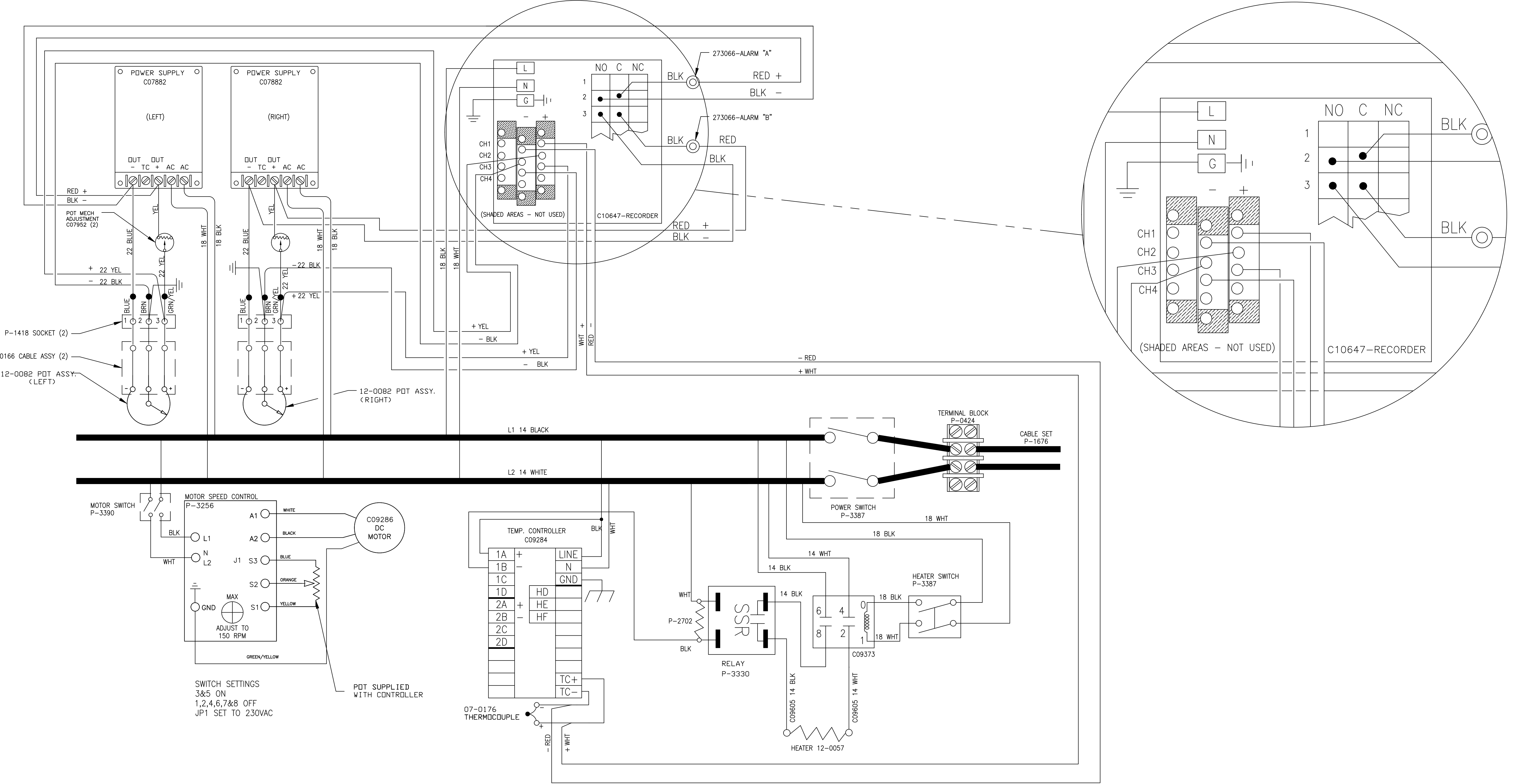
C

B

B

A

A



- NOTES:
- COVER ALL SOLDER JOINTS WITH SHRINK TUBING.
  - TIN ALL WIRE ENDS FOR CONNECTION TO RECORDER, CONTROLLER AND POWER SUPPLIES.
  - ALL WIRE 18 AWG UNLESS OTHERWISE NOTED.
  - CALIBRATE TORQUE SYSTEM USING CALIBRATION APPARATUS AT 100 Bc.
  - USE TERMINAL BLOCKS (P-0417, P-1653) AS REQUIRED TO ROUTE AC POWER WIRING.
  - TWIST ALL AC POWER AND DC SIGNAL WIRING.

		UNLESS OTHERWISE SPECIFIED DIMENSIONS IN INCHES [mm]		<b>CHANDLER ENGINEERING</b>							
		TOLERANCES:									
		1 PLACE    ±0.030    [.76]		TITLE  WIRING DIAGRAM ATMOS. CONSISTOMETER 100-130V							
		2 PLACE    ±0.010    [.25]									
NEXT ASSY	USED ON	3 PLACE    ±0.005    [.127]									
APPLICATION		ANGLES    ±1/2°    32✓									
BREAK SHARP EDGES, DEBURR		APPROVALS						DATE			
d the drawings and technical data contained hereon are Chandler Engineering Company LLC. Reproduction or any form except as expressly authorized by the owner is holder agrees to return this document to the owner on Copyright by Chandler Engineering Company LLC				DRAWN: JBM		10-29-98		SIZE	S.O. NO.	DWG NO.	REV.
				CHECKED: JJM		10-29-98		D		12-0178	R
				ENGR.: JJM		10-29-98		SCALE: 1 = 1		TITLE BLOCK REV: 1.0	

## Please Send Us Your Comments on This Manual

Model Number \_\_\_\_\_ Serial Number \_\_\_\_\_

Printing Date of this manual (from the Title Page) \_\_\_\_\_

Please circle a response for each of the following statements. Use:

(1)= Strongly agree (2) =Agree (3) =Neutral, no opinion (4) =Disagree (5) =Strongly disagree

- |  |       |   |   |   |   |
|--|-------|---|---|---|---|
| a) The manual is well organized.               | 1     | 2 | 3 | 4 | 5 |
| b) I can find the information I want.          | 1     | 2 | 3 | 4 | 5 |
| c) The information in the manual is accurate.  | 1     | 2 | 3 | 4 | 5 |
| d) I can easily understand the instructions.   | 1     | 2 | 3 | 4 | 5 |
| e) The manual contains enough examples.        | 1     | 2 | 3 | 4 | 5 |
| f) The examples are appropriate and helpful.   | 1     | 2 | 3 | 4 | 5 |
| g) The manual layout is attractive and useful. | 1     | 2 | 3 | 4 | 5 |
| h) The figures are clear and helpful.          | 1     | 2 | 3 | 4 | 5 |
| i) The sections I refer to most often are      | _____ |   |   |   |   |

Other comments \_\_\_\_\_

Contact us at our website: [www.chandlereng.com](http://www.chandlereng.com)

Email: [chandler@chandlereng.com](mailto:chandler@chandlereng.com)

## Please add me to your mailing list-

for Product Updates and New Product Releases, Information,  
Technical Articles, and General Announcements of interest to users of this instrument.

Name \_\_\_\_\_

Company \_\_\_\_\_

Address \_\_\_\_\_

Email address \_\_\_\_\_

My instrument is Chandler Model \_\_\_\_\_

Serial Number \_\_\_\_\_



cut out postcards on dotted lines



NO POSTAGE  
NECESSARY  
IF MAILED  
IN THE  
UNITED STATES



**BUSINESS REPLY MAIL**

FIRST CLASS MAIL PERMIT NO. 2303 TULSA, OK

POSTAGE WILL BE PAID BY ADDRESSEE

**CHANDLER ENGINEERING**

P.O. BOX 470710

TULSA, OKLAHOMA 74147-9801 - U.S.A.



NO POSTAGE  
NECESSARY  
IF MAILED  
IN THE  
UNITED STATES



**BUSINESS REPLY MAIL**

FIRST CLASS MAIL PERMIT NO. 2303 TULSA, OK

POSTAGE WILL BE PAID BY ADDRESSEE

**CHANDLER ENGINEERING**

P.O. BOX 470710

TULSA, OKLAHOMA 74147-9801 - U.S.A.





# CHANDLER ENGINEERING

All products of Chandler Engineering are warranted for a period of one year from date of shipment to be free from defective workmanship and material. Providing written notice is made and authorization by us is given, any of our products claimed to be defective may be returned freight prepaid to our factory. If found to be defective and after examination by us, our obligation will be limited to repairing or replacing the product, at our option, free of charge, F.O.B. our factory.

## COMMERCIAL INSTRUMENTATION MANUFACTURED BY OTHERS

Commercial instrumentation manufactured by others is covered by separate manufacturer warranty, generally for one year. Contact Chandler Engineering for instructions on obtaining service directly from the manufacturer.

Our warranty does not cover damage or failure caused by abuse, misuse, abnormal usage, faulty installation, improper maintenance, or any repairs other than those provided by authorized Chandler Engineering personnel.

This warranty is in lieu of all other warranties, expressed or implied, and of all obligations or liabilities on its part for damages including but not limited to consequential damages, following the use or misuse of instruments manufactured by Chandler Engineering Company L.L.C.

## NO WARRANTY OF MERCHANTABILITY OR FITNESS FOR A PARTICULAR PURPOSE SHALL APPLY.

Our total liability on any claim shall not exceed the price allocable to the product or service or part thereof that gives rise to the claim.

**AMETEK®**  
CHANDLER ENGINEERING

2001 North Indianwood Avenue, Broken Arrow, OK 74012

Tel: +1 918-250-7200 • Fax: +1 918-459-0165

e-mail: [chandler.sales@ametek.com](mailto:chandler.sales@ametek.com) • [www.chandlereng.com](http://www.chandlereng.com)

### Houston Sales and Services

4903 W. Sam Houston Parkway, N., Suite A-400, Houston, TX 77041

Tel: +1 713-466-4900 • Fax: +1 713-849-1924