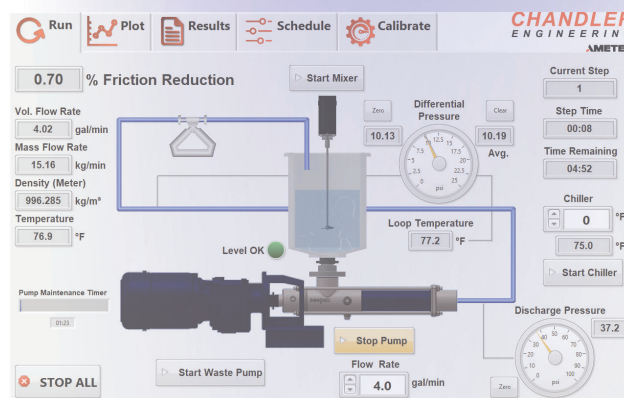


FLOW LOOPS



FRICITION FLOW LOOP 6700-M

The 6700-M Mini-Loop™ system is a benchtop instrument designed to measure the friction pressure of fluids. It determines the relative effects of friction reducer chemistries and treatments. The instrument allows rapid test turn-around for the repeat testing of stimulation fluids.

The unit circulates fluid through a single test section and uses custom Chandler Engineering software to record and analyze test data. This enables reliable testing in a simple to operate, compact system. The unit is ideal for Quality Control Testing of Slick Water Frac Fluids.

The Mini Flow Loop system incorporates a low shear, progressive cavity pump for circulation of base fluids. A differential pressure transmitter measures the friction pressure across the test section. The friction reducing agent is added directly into the five gallon reservoir mixing tank.

The software is designed to be easy to use and powerful enough to calculate and collect all required data during the test cycle. All data and test parameters are stored in a test-specific .CSV file for analysis.

* Optional add-on module to enable real time display of flow rate and fluid density.



FEATURES

- ✓ Quick to Set up, Simple to Operate, and Easy to Clean and Maintain, Saving Time and Cost
- ✓ Benchtop Unit Fits Easily into Lab Environment
- ✓ Over Pressure Relief Valve to Enhance Safety
- ✓ Progressive Cavity Style Pump to Preserve Fluid Integrity
- ✓ Real-Time Display of Temperature, Differential Pressure and Friction Reduction Percentage for Instant Monitoring and Precise Performance Adjustments
- ✓ Keyboard Tray for Ergonomics and Operator Convenience

FRICITION FLOW LOOP

6700-M

SPECIFICATIONS*

Maximum Pressure: 50 PSI

Flow Rate: 4 Gallons/Minute

Flow Rate Accuracy:
+/-0.2% of Reading

Differential Pressure Range:
0-30 PSI

Differential Pressure Accuracy:
±0.25% of Full Scale

Operating Conditions:
40°-88°F / 4°-31°C

Maximum Sample Temperature:
113°F/45°C (no heating control is included)

Air Supply: 30-100psi

Nitrogen Supply: 30-100psi

Primary Wetted Materials: 316SS

Single Measurement Test Section:
3/8" OD, 5 Gallon Mixing Tank

Power Requirements:

Input Voltage:
208-240 VAC

Input Current: 3A

Frequency: 50/60 Hz, 1 Phase

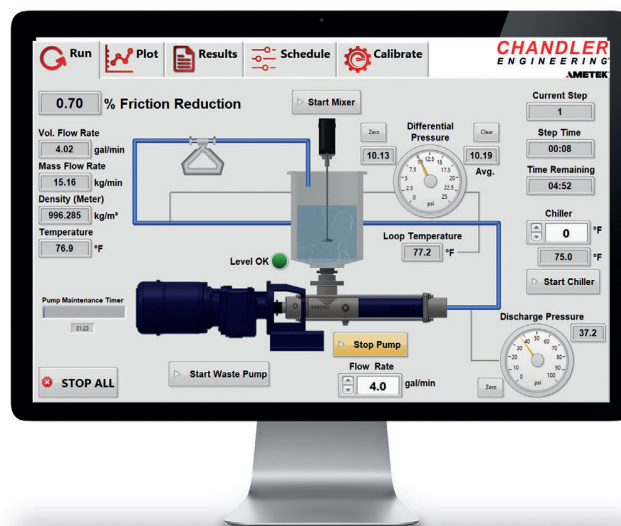
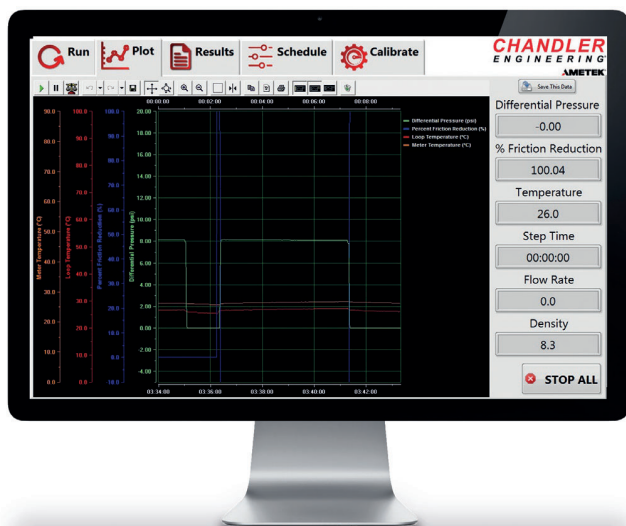
Dimensions (w x d x h):

55" x 18" x 46.2"
(removable keyboard tray increases depth to 30)

Weight: 200 Pounds

Water: 40-80 psi (for system cleanup)

SOFTWARE FORMAT EXAMPLES



*Manufacturer's specifications subject to change without notice

