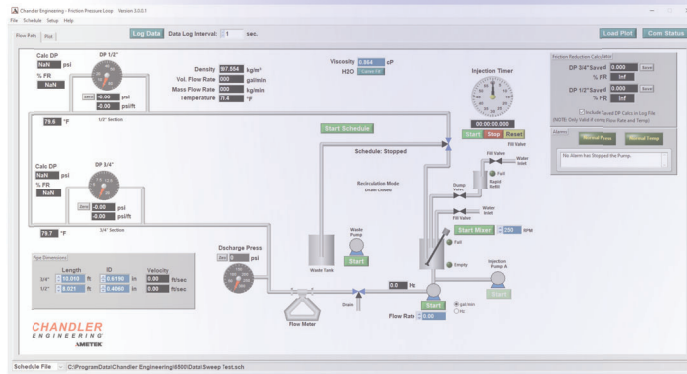


FLOW LOOPS



FRICITION FLOW LOOP MODEL 6700

The Model 6700 Friction Flow Loop fully automated system includes hardware and software to measure the friction pressure of fluids. It determines the associated affects friction reducers have on fluids over a wide range of pressures and flow rate conditions and through different pipe diameters.

This Model circulates fluid through two test sections of different diameters in order to generate differential pressure versus flow rate data. This data helps to determine the effectiveness and longevity of various friction reducing agents added to the aqueous base fluid.

The system incorporates a low shear, progressive cavity pump for circulation of base fluids with the flow rate controlled by a Coriolis flow meter. Differential pressure transducers are provided on each of the two test sections for multiple data readings per test. Additives can be injected into the flow stream via an optional metering pump or added directly into the 20 gallon reservoir mixing tank.

The software is designed to be easy to use and powerful enough to calculate and collect all required data during the test cycle. The software allows the operator total control over flow rate, test time, temperature (optional) of each individual test. All data and test parameters are stored in a test-specific .CSV file for analysis.

FEATURES

- ✓ Open or Closed Loop Architecture
- ✓ Easy to Set-Up, Operate, Clean, Maintain and Calibrate
- ✓ Flush, Fill and Drain Automation, Optional Rapid Fill Module (add-on)
- ✓ Wall, Floor or Benchtop (for loop tubing) Mountable
- ✓ ½" and ¾" O.D., 10' Linear Test Sections
- ✓ Coriolis Mass Flow Meter
 - Accurate measurement and feedback of flow rate
- ✓ Over Pressure Relief Valve
 - Safety control prevents operation above the designed pressures
- ✓ Progressive Cavity Style Pump
 - Introduces minimal shear to fluids
- ✓ Real Time Display of Reynolds Number, Flow Rate, Temperature, Differential Pressure, Percent Friction Reduction



FRICTION FLOW LOOP

MODEL 6700

MODELS

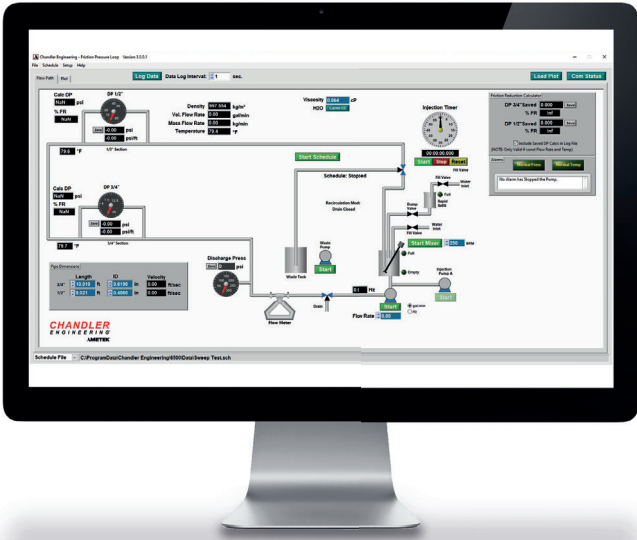
6700-AM Ambient Fluid Temperature
6700-CH With Chiller, Fluid Temperature to 40°F

SPECIFICATIONS*

Maximum Pressure: 200 PSI
Flow Rate Range: 3 – 18 Gallons / Minute
Fluid Temperature Range: 60 – 90°F (40°F with Optional Chiller)
Differential Pressure Range (1): 0 – 30 PSI
Differential Pressure Range (2): 0 – 100 PSI
Differential Pressure Accuracy: 0.1% of Full Scale

Power Requirements: 208 - 240 VAC, 50 or 60 Hz ±10%, 40A
Dimensions (w x d x h): 24' x 3' x 7'
Compressed Air: 85-100 psi
Water: 30-60 psi (for system cleanup)

SOFTWARE FORMAT EXAMPLES



*Manufacturer's specifications subject to change without notice

